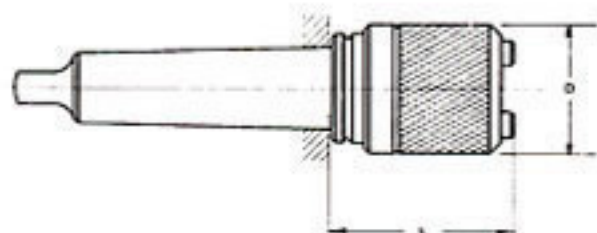
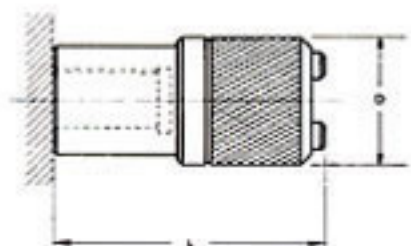


Tapping uncut, WF type

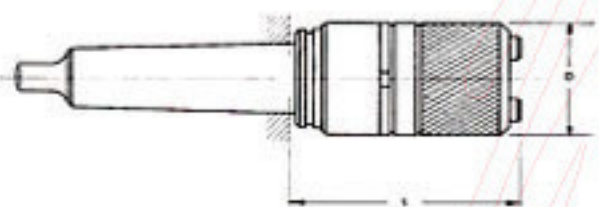


Specifications	Tapping Ability	Tapping Chuck Type	Outer Dia. D	Length L
WF 0/JT 1	M3~M8 (M10) U ¹ / ₈ ~U ⁵ / ₁₆ (U ³ / ₈)	0	23	39
WF 1/JT 2	M3~M12 (M14) U ¹ / ₈ ~U ⁹ / ₁₆ Pipe 1/8"~1/4"	1	32	44
WF 2/ MT 2, MT 3	M8~M22 U ³ / ₈ ~U ⁷ / ₈ Pipe 1/2"~1/2"	2	50	61
WF 3/ MT 3	M16~M38 U ³ / ₄ ~U ¹ / ₂ Pipe 1/2"~1 1/8"	3	72	91

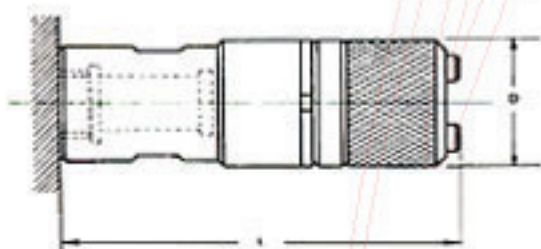


Specifications	Tapping Ability	Tapping Chuck Type	Outer Dia. D	Length L
WF 0/JT 2	M3~M8 (M10) U ¹ / ₈ ~U ⁵ / ₁₆ (U ³ / ₈)	0	23	55
WF 1/JT 6 or JT 2	M3~M12 (M14) U ¹ / ₈ ~U ⁹ / ₁₆ Pipe 1/8"~1/4"	1	32	65

Radial floating tapping unit WFP type

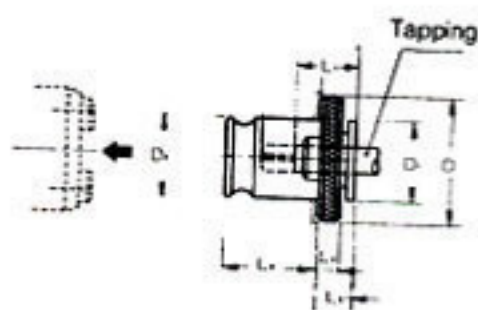


Specifications	Tapping Ability	Tapping Chuck Type	Radial Correction Floating Capacity	Outer Dia. D	Length L
WFP 0/JT 1	M3~M8 (M10) U ¹ / ₈ ~U ⁵ / ₁₆ (U ³ / ₈)	0	0.25	23	59
WFP 1/JT 2	M3~M12 (M14) U ¹ / ₈ ~U ⁹ / ₁₆ Pipe 1/8"~1/4"	1	0.5	32	65
WFP 2/ MT 2, MT 3	M8~M22 U ³ / ₈ ~U ⁷ / ₈ Pipe 1/2"~1/2"	2	1	50	91
WFP 3/ MT 3	M16~M38 U ³ / ₄ ~U ¹ / ₂ Pipe 1/2"~1 1/8"	3	1.5	72	132



Specifications	Tapping Ability	Tapping Chuck Type	Radial Correction Floating Capacity	Outer Dia. D	Length L
WFP 0/JT 2	M3~M8 (M10) U ¹ / ₈ ~U ⁵ / ₁₆ (U ³ / ₈)	0	0.25	23	86
WFP 1/JT o JT 6	M3~M12 (M14) U ¹ / ₈ ~U ⁹ / ₁₆ Pipe 1/8"~1/4"	1	0.5	32	100

Tapping chuck

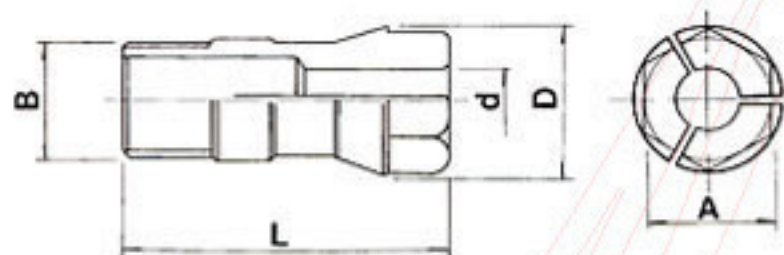


Specifications	Tapping Ability	Tapping Chuck Type	D	D1	D2	L1	L3	L4	L5
WE 0	M3~M8 (M10)	0	22	12.5	13	15	4	19.5	7
WE 1	M4~M12 (M14)	1	30	19	19	17	4	21.5	7
WE 2	M8~M22	2	48	30	31	30	5	35.5	11
WE 3	M16~M38	3	70	47	48	44	6	55.5	14

HEX. COLLET

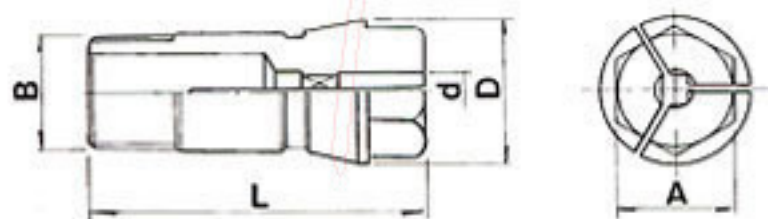


For Dilling Remark: ϕ dis shank dia. of drill



Model No.	ϕ d mm Shank dia.	ϕ D mm	L mm	B	A mm	Max. Clamping Ability mm
C-5	ϕ 2~ ϕ 5	ϕ 10.8	31.5	5/16-24UNF	8	ϕ 5
C-6	ϕ 2~ ϕ 6	ϕ 13.2	34.5	3/8-24UNF	10	ϕ 6
C-9	ϕ 2.5~ ϕ 9	ϕ 16.9	45	1/2-20UNF	14	ϕ 9
C-12	ϕ 3~ ϕ 12	ϕ 21.1	50	5/8-18UNF	17	ϕ 12
C-14	ϕ 5~ ϕ 14	ϕ 24	53	3/4-16UNF	21	ϕ 14
C-16	ϕ 5~ ϕ 16	ϕ 31	70	M24x2.0	26	ϕ 16

For Tapping Remark: ϕ dis shank dia. of tapping



Model No.	ϕ d mm Shank dia.	ϕ D mm	L mm	B	A mm	Max. Clamping Ability mm
CT-5	ϕ 2~ ϕ 5	ϕ 10.8	31.5	5/16-24UNF	8	M5x0.8
CT-6	ϕ 2~ ϕ 6	ϕ 13.2	34.5	3/8-24UNF	10	M6x1.0
CT-9	ϕ 2.5~ ϕ 9	ϕ 16.9	45	1/2-20UNF	14	M8x1.25
CT-12	ϕ 3~ ϕ 12	ϕ 21.1	50	5/8-18UNF	17	M12x1.75
CT-14	ϕ 5~ ϕ 14	ϕ 24	53	3/4-16UNF	21	M16x2.0
CT-16	ϕ 5~ ϕ 16	ϕ 31	70	M24x2.0	26	M20x2.0

Tapping size table

Metric System	English System	English System	Dia. ϕ	Quadrangle \square
M3		W ¹ / ₈	4	3.22
M4 M4.5		W ⁵ / ₃₂	5	4
M5 M5.5		W ³ / ₁₆	5.5	4.5
M6	U ¹ / ₄	W ¹ / ₄	6	4.5
	U ⁵ / ₁₆	W ⁵ / ₁₆	6.1	5
M8 M7			6.2	5
M10 M9	U ³ / ₈	W ³ / ₈	7	5.5
	M11 U ⁷ / ₁₆	W ⁷ / ₁₆	8	6
M12			8.5	6.5
	U ¹ / ₂	W ¹ / ₂	9	7
M14 M15	U ⁹ / ₁₆	W ⁹ / ₁₆	10.5	8
	U ⁵ / ₈	W ⁵ / ₈	12	9
M16			12.5	10
	M17		13	10
M18	U ³ / ₄	W ³ / ₄	14	11
M20			15	12
M22	U ⁷ / ₈	W ⁷ / ₈	17	13
M24 M25			19	15
M27 M26	U1	W1	20	15
	M28		21	17
	U ¹¹ / ₈	W ¹¹ / ₈	22	17
M30			23	17
	M32 U ¹¹ / ₄	W ¹¹ / ₄	24	19
	M33		25	19
M35 M34	U ¹³ / ₈	W ¹³ / ₈	26	21
M36 M36			28	21
M39 M40	U ¹¹ / ₂	W ¹¹ / ₂	30	23
M42		W ¹⁵ / ₈	32	26
M45	U ¹³ / ₄	W ¹³ / ₄	35	26
M48		W ¹⁷ / ₈	38	29

PT	PS	PF	Dia. ϕ	Quadrangle \square
1/8	1/8	1/8	8	6
1/4	1/4	1/4	11	9
3/8	3/8	3/8	14	11
1/2	1/2	1/2	18	14
		5/8	19	15
3/4		3/4	23	17
		7/8	24	19
1	1	1	26	21
	1 1/8	1 1/8	28	21
1 1/4	1 1/4	1 1/4	32	26
1 3/8	1 3/8	1 3/8	35	26
1 1/2	1 1/2	1 1/2	38	29